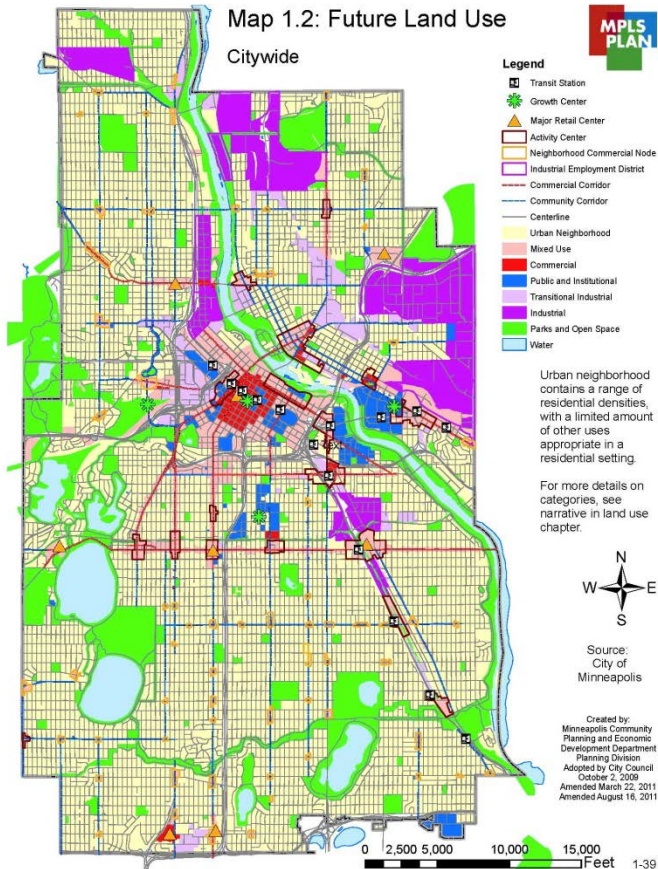




April 2, 2016 – Community Connections Conference

COMPREHENSIVE PLAN *UPDATE*

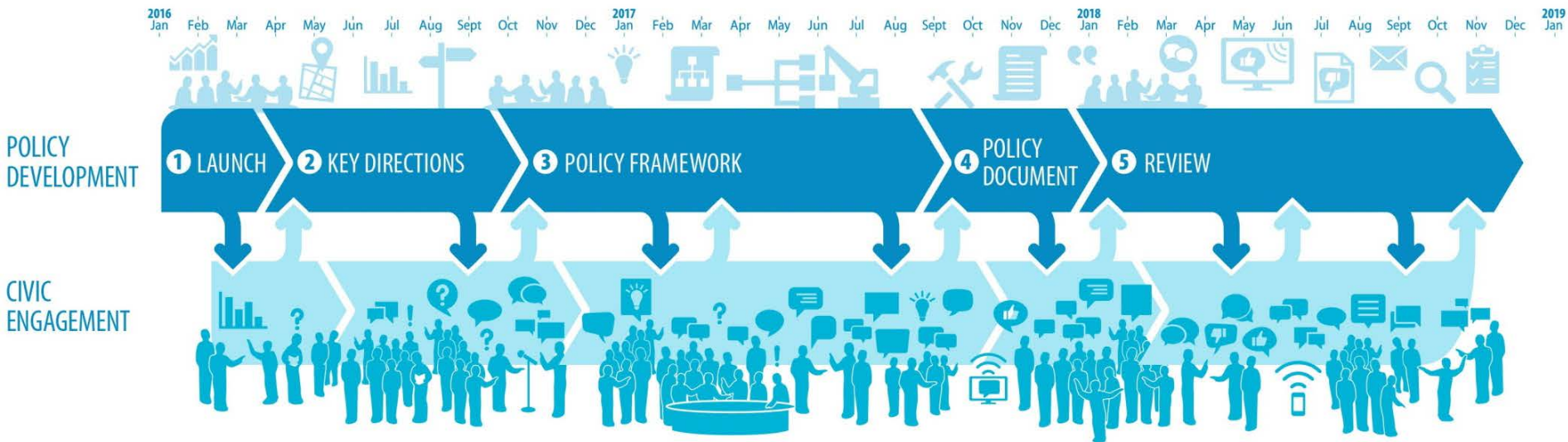
AFFORDABILITY, DESIGN, & PRESERVATION



- Provides **long range policy guidance** for the City
- **Legally required** by state statute & Metropolitan Council regulation
- Must be updated every **10 years**
- Must be in compliance with **regional policy plans**
 - Transportation
 - Water
 - Parks
 - Housing



- Required by the Metropolitan Land Planning Act (§473)
 - Land use
 - Transportation
 - Housing
 - Parks and trails
 - Water resources
 - Implementation
 - *Natural resource protection*
 - *Historic resource protection*
 - *Public facilities plan*
- “Issues of regional importance” identified by Metropolitan Council
 - Economic competitiveness
 - Resilience
 - *Equity*





MISSION STATEMENT

Minneapolis 2040:

An inspiring city growing in equity,
health, & opportunity.



Growth



Equity



Sustainability



Livability



Competitiveness



Good Government

The Process is:

MEANINGFUL

RELEVANT

ACCESSIBLE

INCLUSIVE

EQUITABLE

The Community is:

REPRESENTED

INFORMED

HEARD

EMPOWERED

- Meaningful and relevant dialogue
- Inclusive representation
- Access to information & opportunities
- An empowering experience
- Contributions are heard & have impact
- Effective use of resources



PUBLIC LAUNCH ON APRIL 2

communityconnectionsconference
BIG IDEAS
Your Minneapolis

 Search

twitter

[Home](#) [About](#) [Participate](#) [Resources](#)

[Home](#)

Frequently Asked Questions

- [What is Minneapolis 2040?](#)
- [How will the City use Minneapolis 2040?](#)
- [Why is the City updating its comprehensive plan?](#)
- [What are the comprehensive plan values?](#)
- [What is the Minneapolis 2040 process?](#)
- [How do I get involved?](#)
- [How will my voice be heard and my feedback used?](#)

What is Minneapolis 2040?

It is the update to the City's Comprehensive Plan... It will shape citywide policies and



Sign Up For Updates

Name

Email

Submit

Welcome to
Minneapolis 2040



TODAY'S SESSION

- Participate in discussion around key comprehensive plan values
- Share your “big ideas” for the comprehensive plan update

#MplsBigIdeas

- Visit the website and sign up for future announcements of events and reports (including summary from this conference)

<http://minneapolis2040.com>

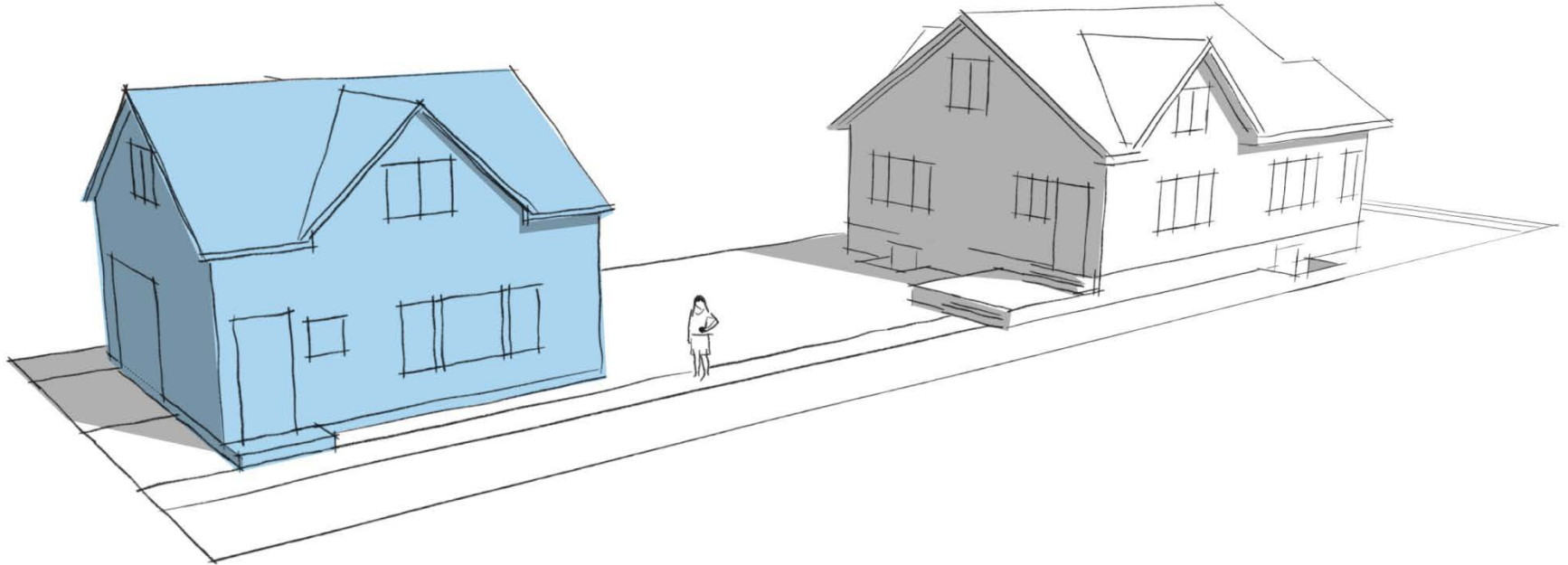
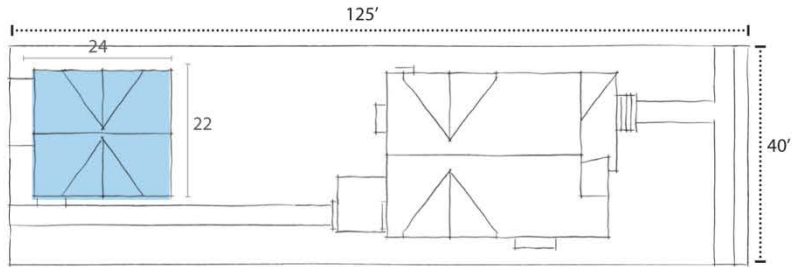
Public Realm Enhancement



Housing Options: ADU's

*Detached Accessory Dwelling Unit
w/ enclosed parking*

500 sqft





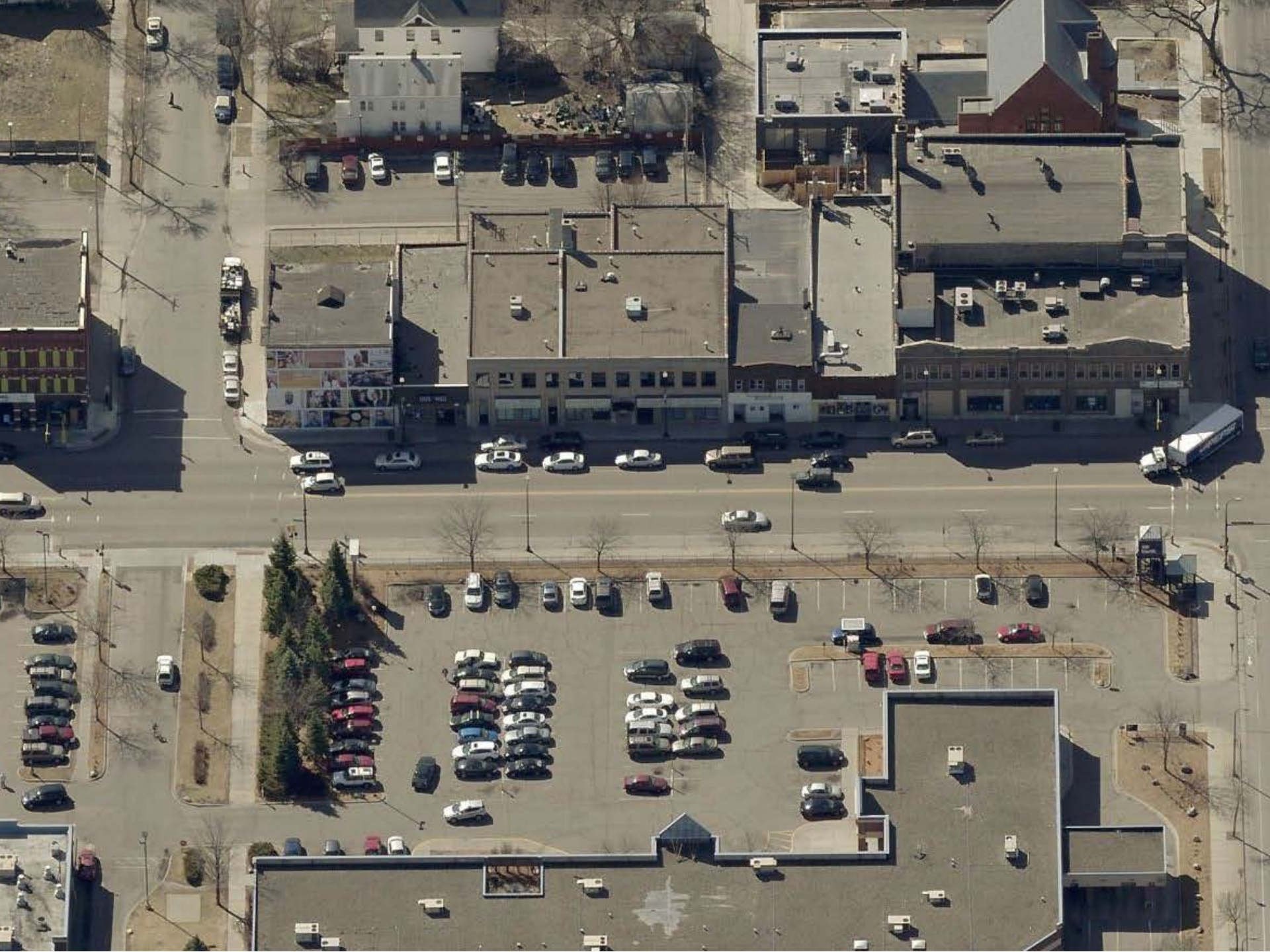
Housing Options: ADU's

Placemaking



















What are *your* big ideas?

Follow Up

- Share your “big ideas” for the comprehensive plan update
#MplsBigIdeas
- Visit the website and sign up for future announcements of events and reports (including summary from this conference)
minneapolis2040.com

Andrea Brennan: Andrea.Brennan@minneapolismn.gov

Peter Crandall: Peter.Crandall@minneapolismn.gov

Kellie Jones: Kellie.Jones@minneapolismn.gov

Brian Schaffer: Brian.Schaffer@minneapolismn.gov

Janelle Widmeier: Janelle.Widmeier@minneapolismn.gov